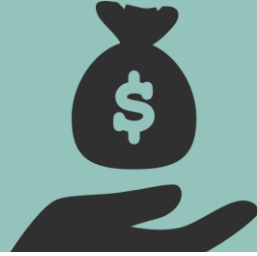




Team 1

Global ATM

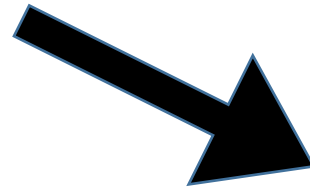
-Stage 2040-



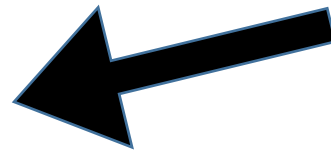
Interaction Diagram



Class Diagram



Operation



CONTENTS

001. Stage 2030

002. UI

003. Package Diagram

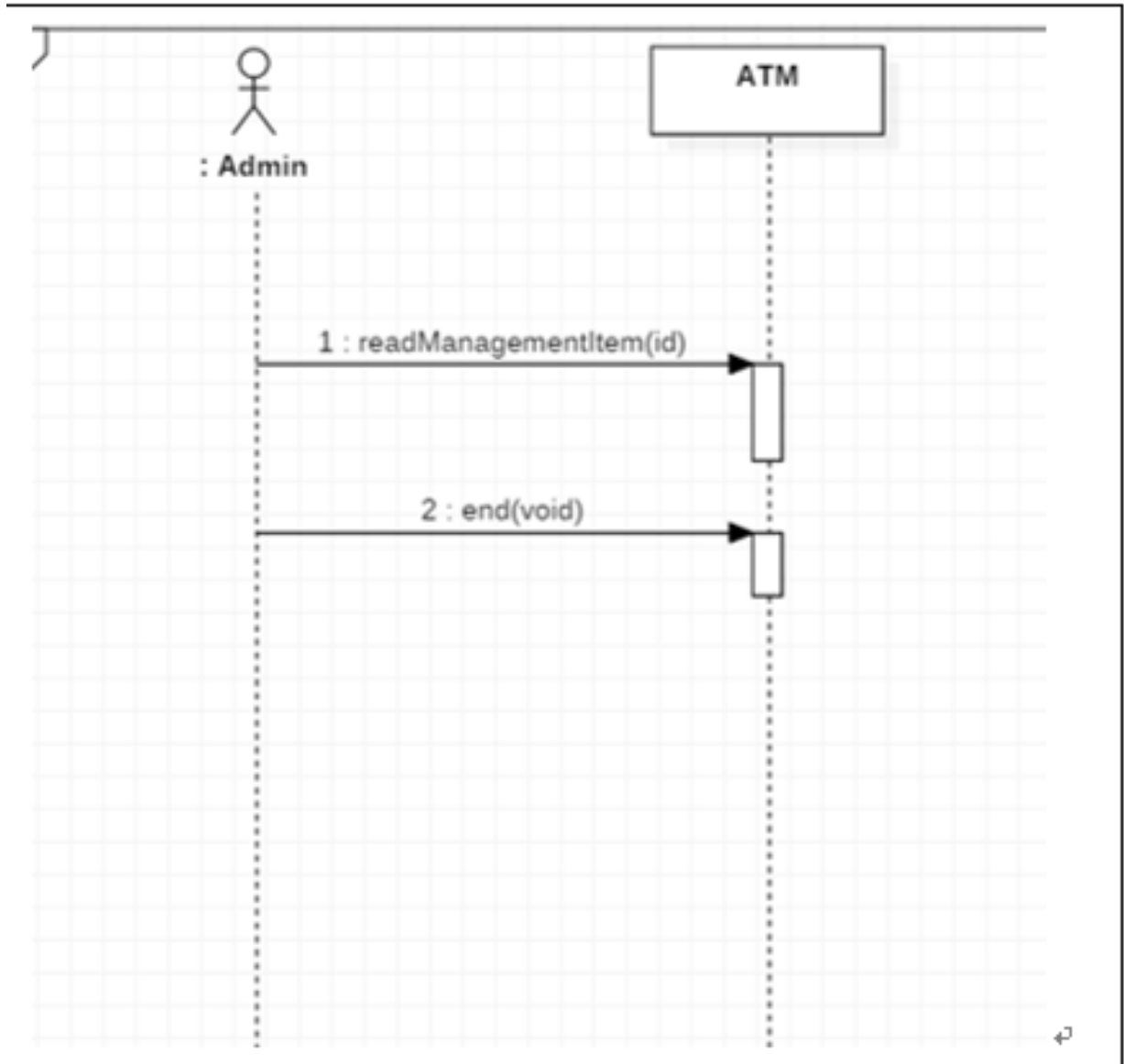
004. Interaction Diagram

005. Class Diagram

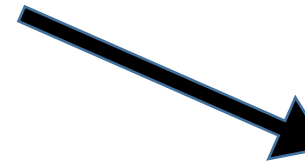
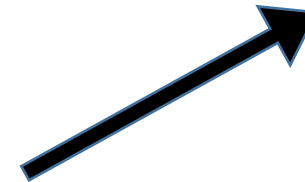
006. Traceability Analysis



001. Stage 2030



Name.	<u>readManagementItem(id)</u> .
Responsibilities.	받은 <u>key</u> 를 읽고 관리자 <u>key</u> 인지 확인한다..
Type.	System.
Cross References.	Functions : R.3.0. Use cases : Management.
Notes.	..
Exceptions.	..
Output.	<u>atm 기기</u> 를 열어준다. 관리자가 접근 가능하도록 만든다..
Pre-conditions.	<u>N/A</u> .
Post-conditions.	<u>Atm 기기</u> 가 열린다..



Name.	<u>end(void)</u> .
Responsibilities.	관리자가 작업을 끝내고 <u>atm 기기</u> 를 닫는다..
Type.	System.
Cross References.	Functions : R.3.0. Use cases : Management.
Notes.	..
Exceptions.	..
Output.	관리자의 작업이 끝난 것을 알아채고 <u>home 화면</u> 으로 돌아간다..
Pre-conditions.	관리자가 작업을 끝낸다..
Post-conditions.	<u>초기 화면</u> 으로 돌아간다..

001. Stage 2030

Managemen t.	5-7.	관리자가 관리자 key 를 넣은 경우 key 를 제대로 읽고 atm 기기가 열리면서 관리자 mode 가 제공되는지 확인한다..	Management..	R.3.0..
	5-8.	관리자가 관리 작업을 끝내고 end 를 하면 원래 첫 홈 화면으로 돌아가는지 확인한다..	Management..	R.3.0..

001. Stage 2030

System Function		Use case		Operation
R.1.0 Check	→	Check	→	readItem(account)
R.1.1 Deposit	→	Deposit	→	selectService(service)
R.1.2 Withdraw	→	Withdraw	→	confirm(password)
R.1.3 Transfer	→	Transfer	→	insertCash(type,amount)
R.1.4 Issue Traffic Card	→	Issue TrafficCard	→	selectMoneyType(type)
R.3.0 Management	→	Management	→	enterAmounts(amounts)
				destAccount(bank,account)
				setDataRange(data_range)
				agrrement(approval)
				printReceipt(print)
				readManagementItem(id)
				end()


002. UI

카드나 통장을 넣어주세요
Please insert **Card** or **Bankbook**



GLOBAL ATM

작업중입니다, 잠시만 기다려주세요
Working, Please wait



GLOBAL ATM

서비스를 선택하세요

- 1** 조회
- 2** 입금
- 3** 출금
- 4** 송금
- 5** 교통카드 발급
- 6** 취소



GLOBAL ATM

비밀번호를 입력하세요

비밀번호:

1

1	2	3
4	5	6
7	8	9
←	0	□

2 취소

GLOBAL ATM

명세표를 받으시겠습니까?

- 1** 명세표 출력
- 2** 명세표 생략

거래 금액:
수수료:
거래후잔액:

GLOBAL ATM

002. UI

금액을 입력하세요 2 확인

금액:

1

1	2	3
4	5	6
7	8	9
←	0	만원

3 취소

GLOBAL ATM

송금 대상 정보를 입력하세요

국민 계좌번호:

1

- 신한
- 기업
- 농협

2

1	2	3
4	5	6
7	8	9
←	0	

3 취소

GLOBAL ATM

현금 입금 2 닫기

1회 최대 100매

1



3 취소

GLOBAL ATM

어떤 출금을 할 것인지 선택하세요

1 원

2 달러

3 취소

GLOBAL ATM

언제까지 사용할 것인지 선택하세요

1

05 May 2018						
일 SUN	월 MON	화 TUE	수 WED	목 THU	금 FRI	토 SAT
	1	2	3	4	5	6
7	8	9	10	11	12	13
14	15	16	17	18	19	20
21	22	23	24	25	26	27
28	29	30	31			

2 취소

GLOBAL ATM

1 확인

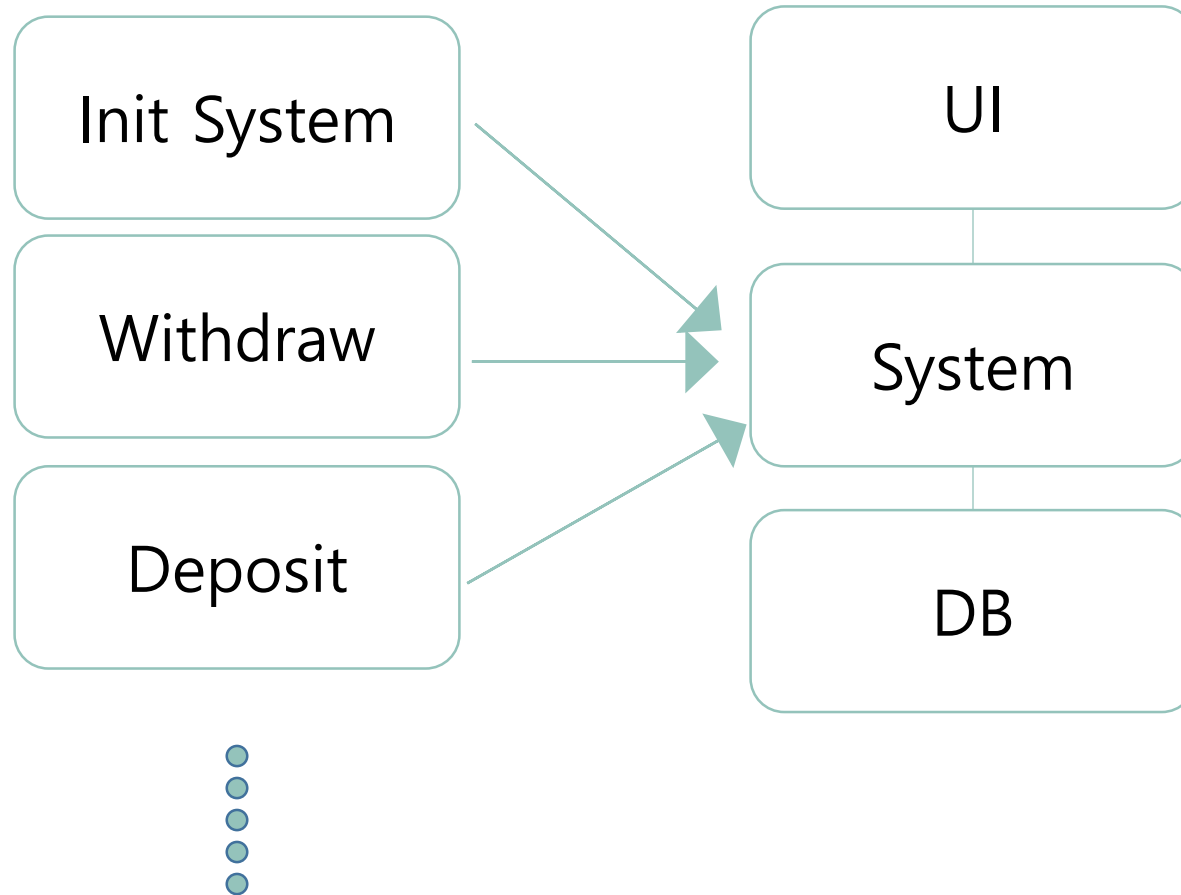
현재 계좌와 교통카드 연동에 동의하고
교통 카드비용 3000원 결제하시겠습니까?

2 취소

GLOBAL ATM

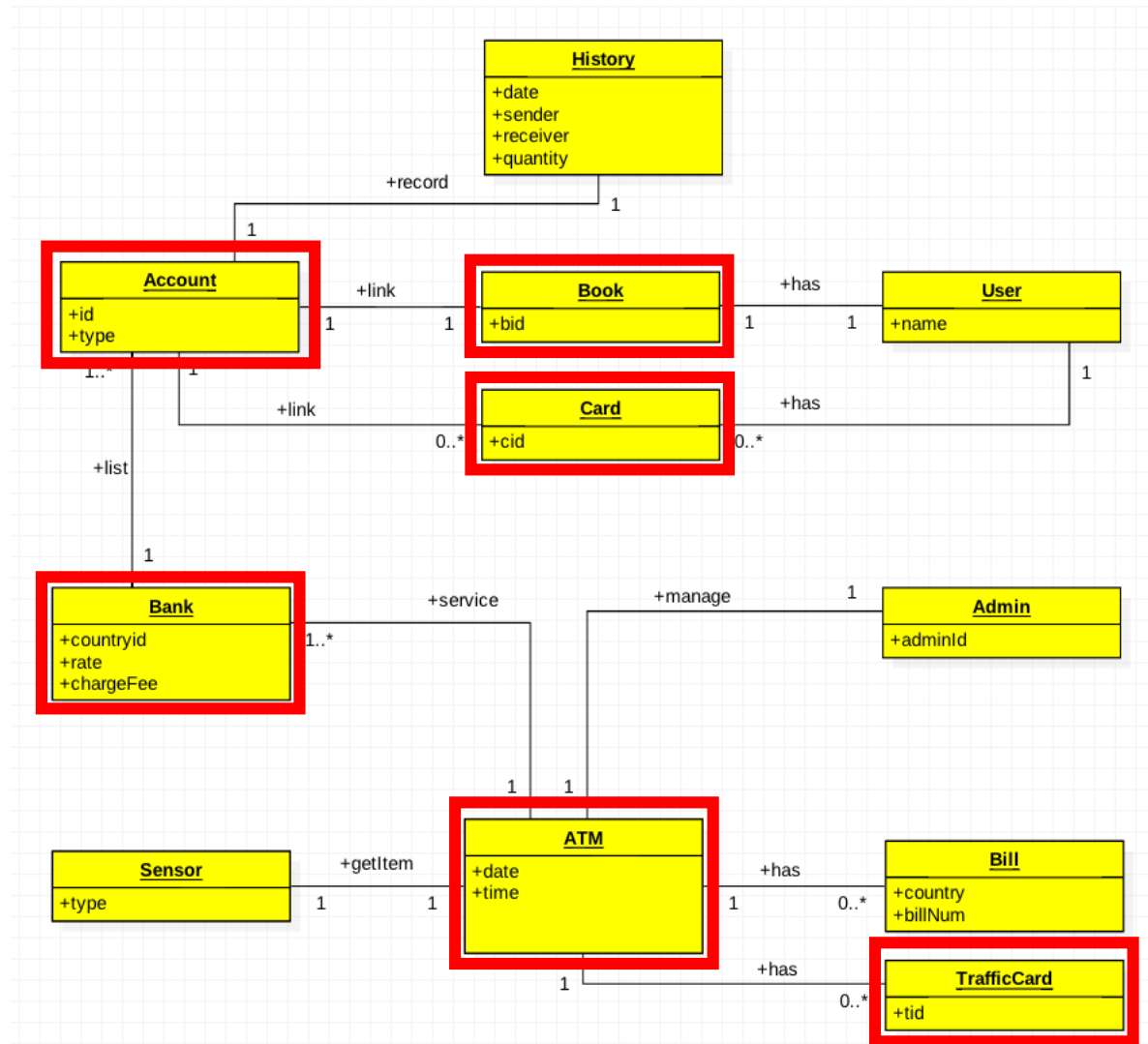
004. Package Diagram

“Class”-OOAD??

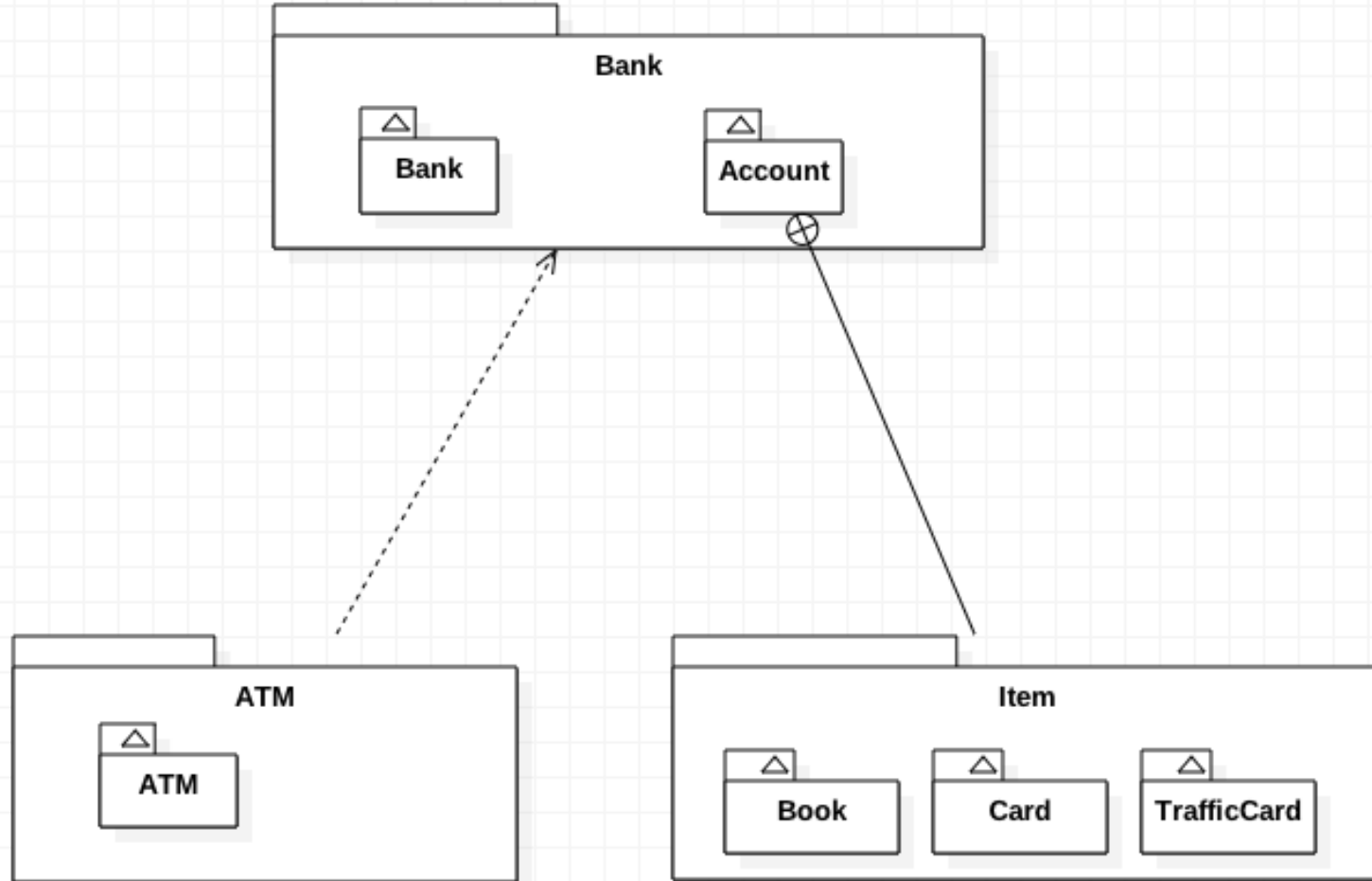


004. Package Diagram

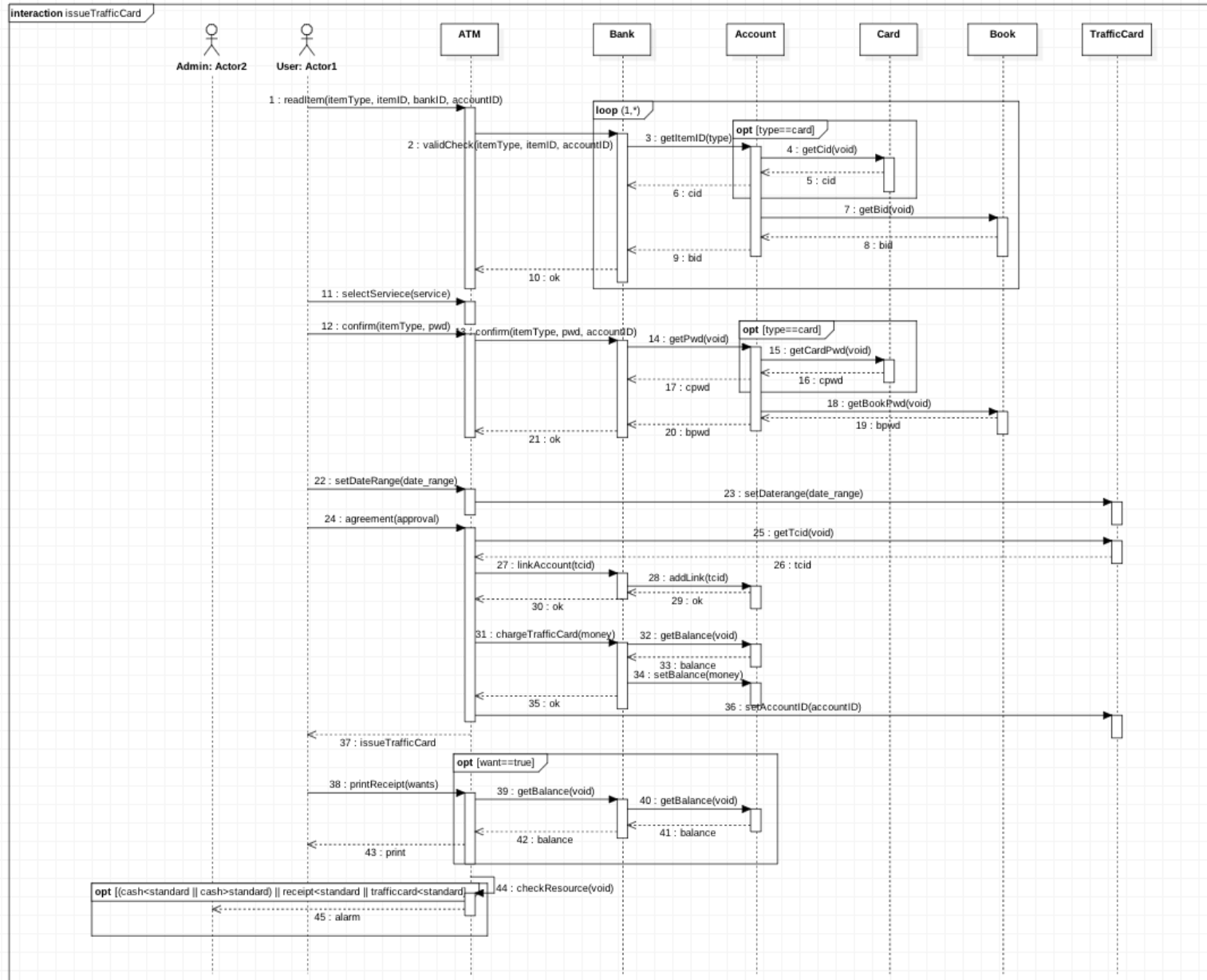
“Class”



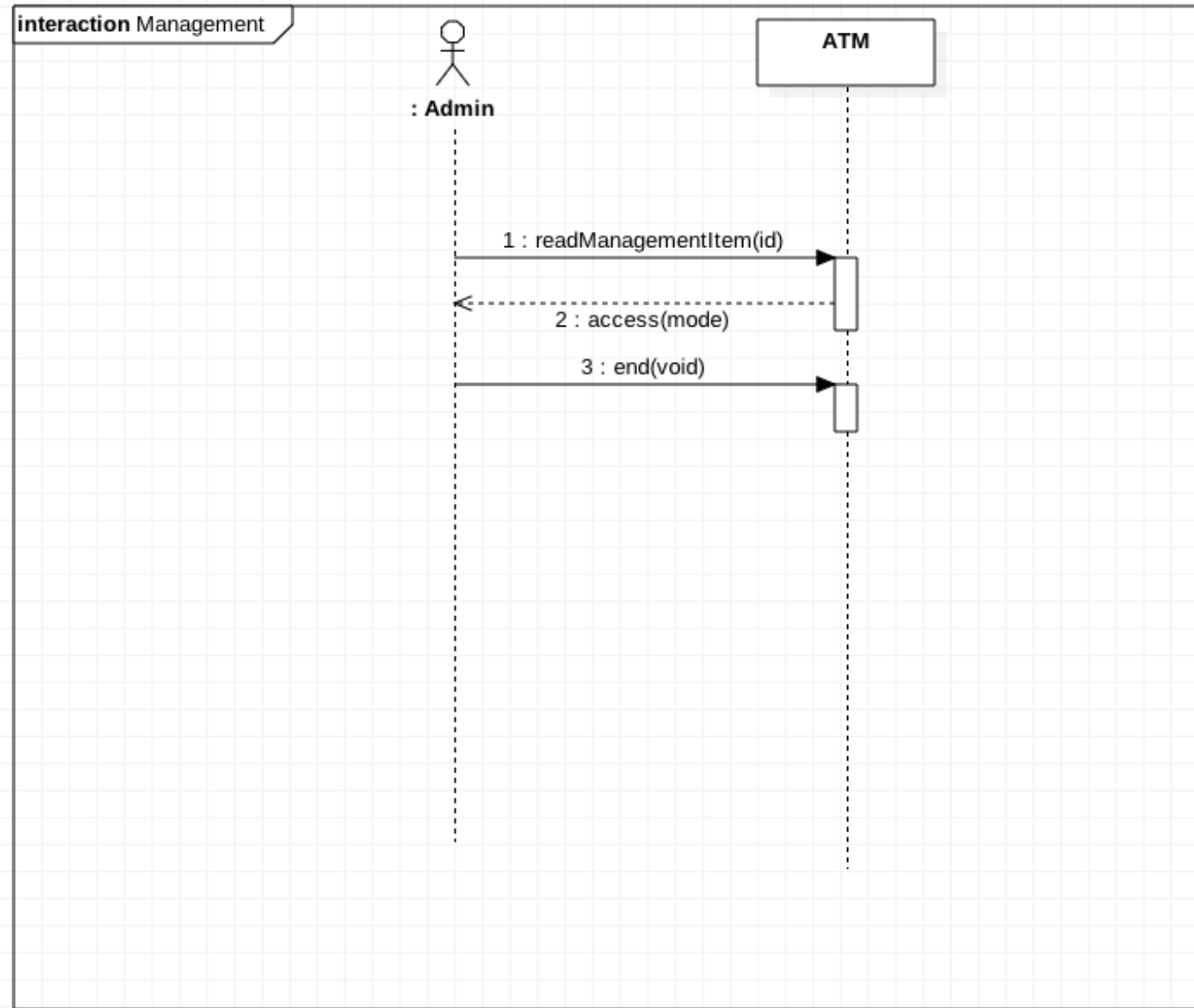
004. Package Diagram



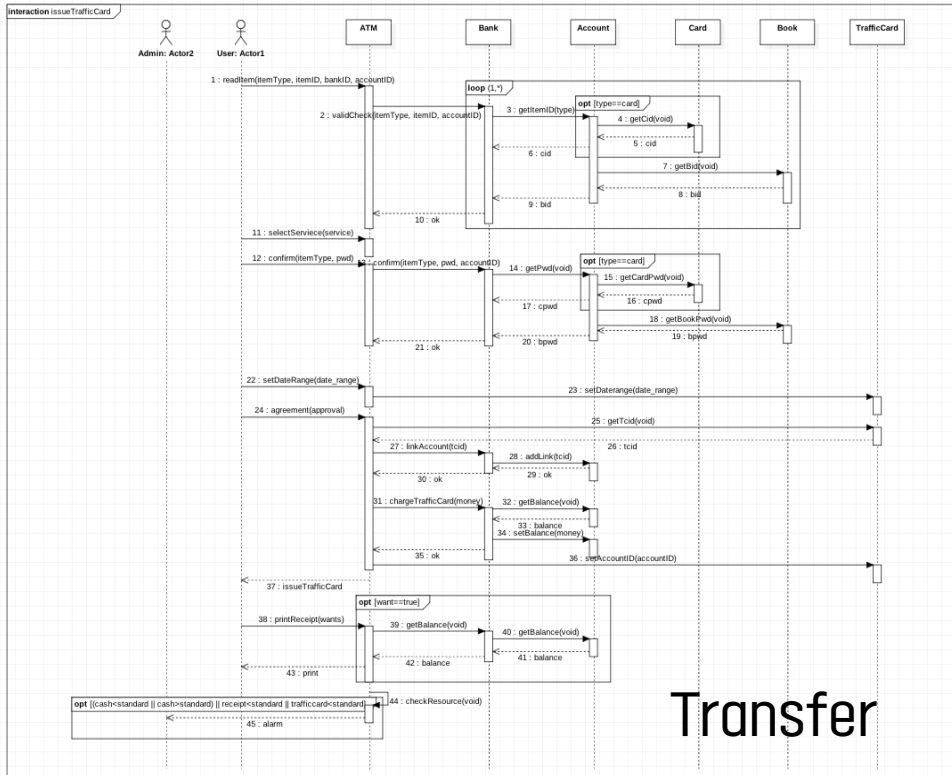
005. Interaction Diagram-IssueTrafficCard



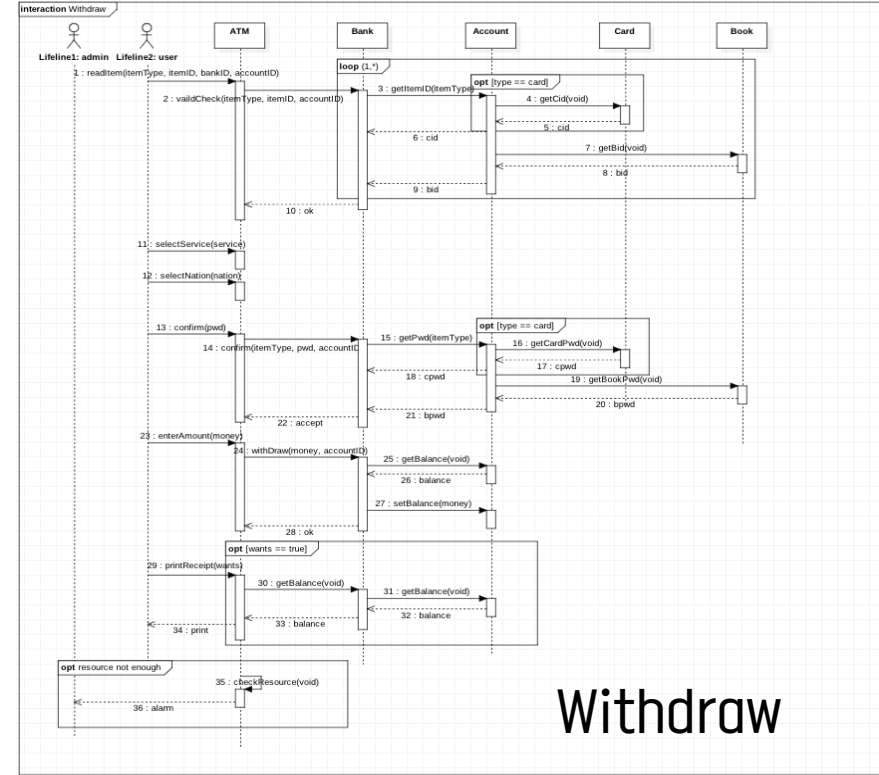
005. Interaction Diagram-Management



005. Interaction Diagram

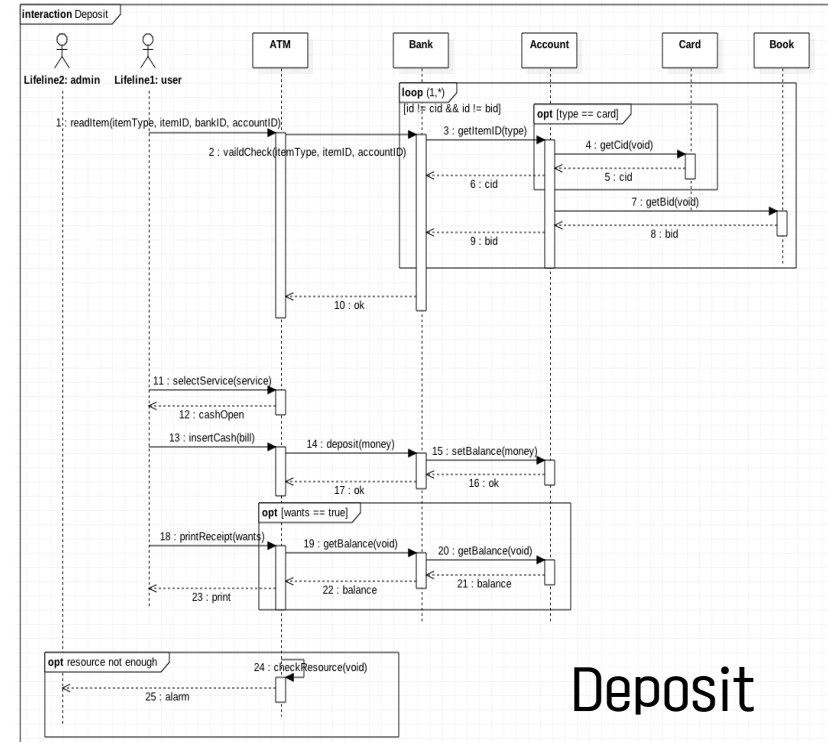
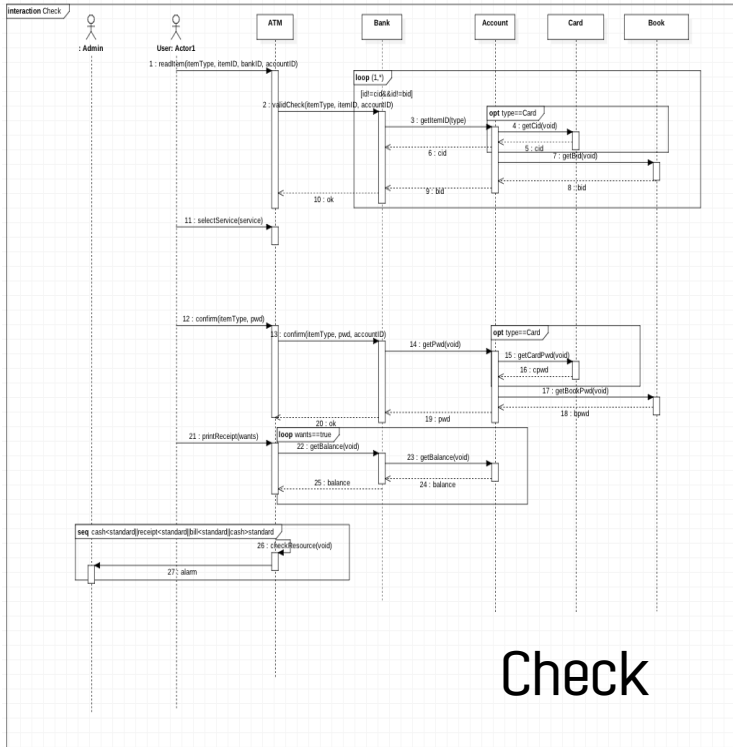


Transfer

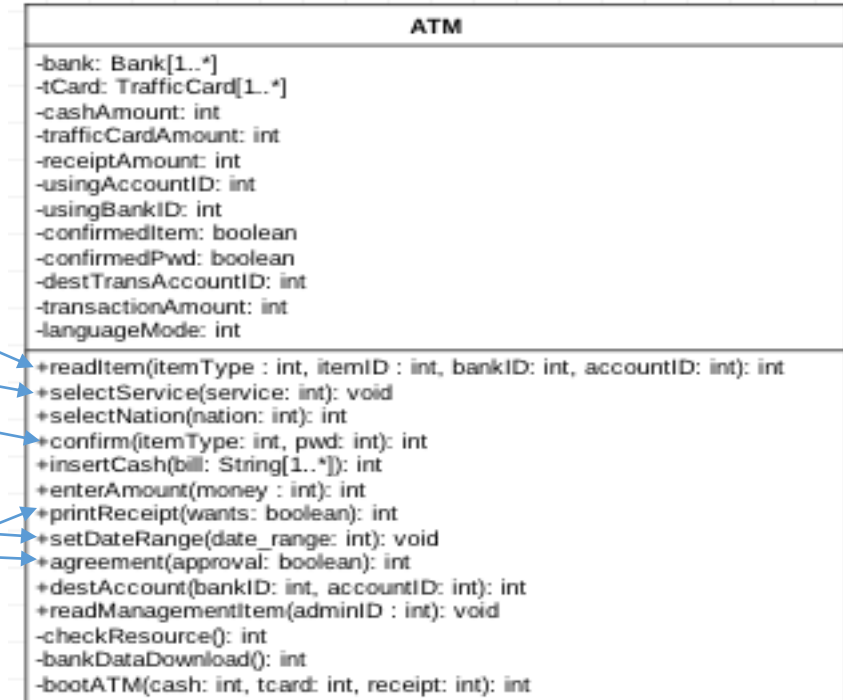
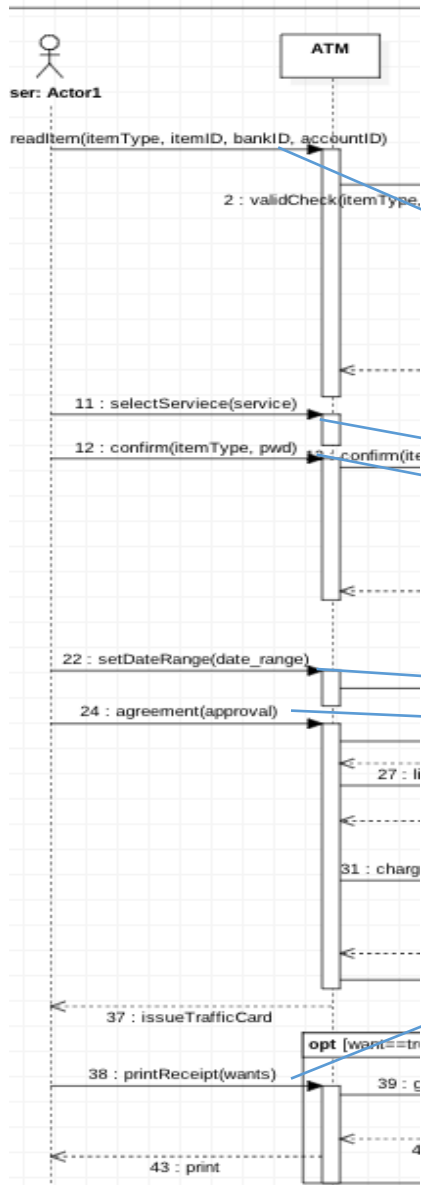


Withdraw

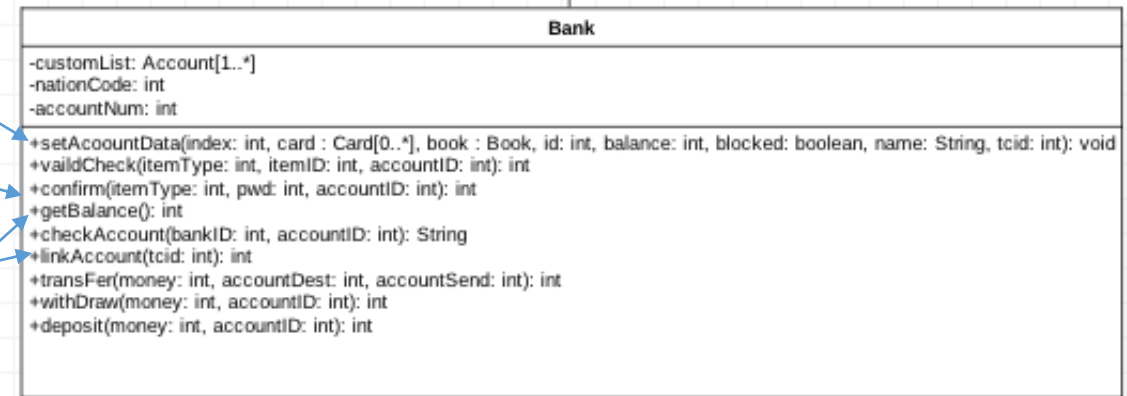
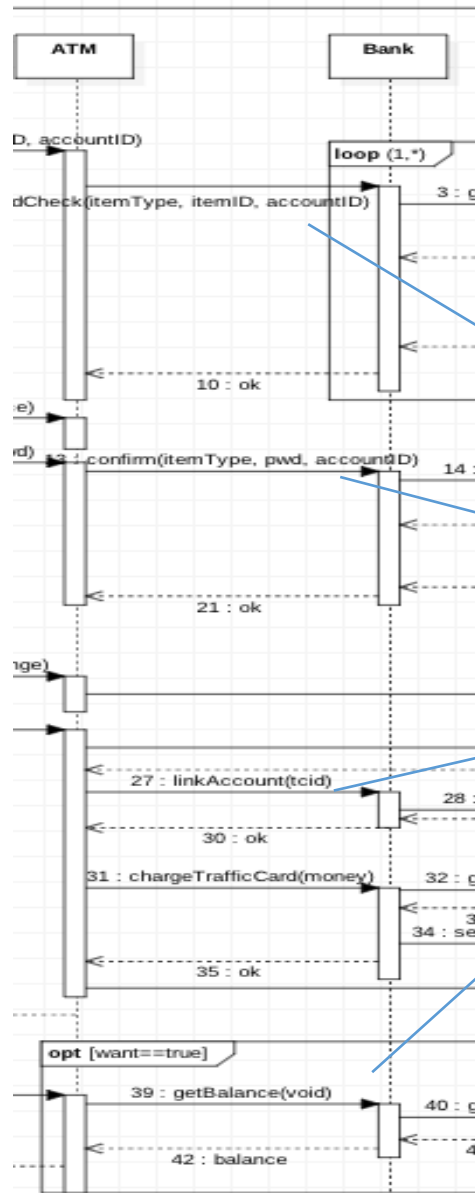
005. Interaction Diagram



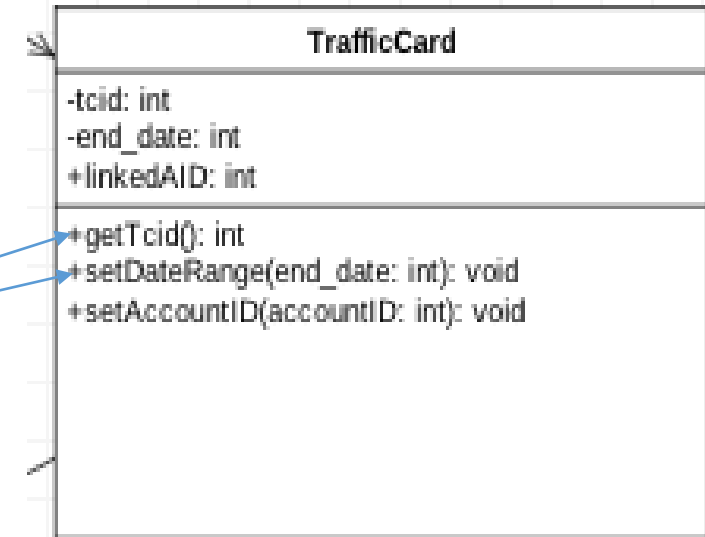
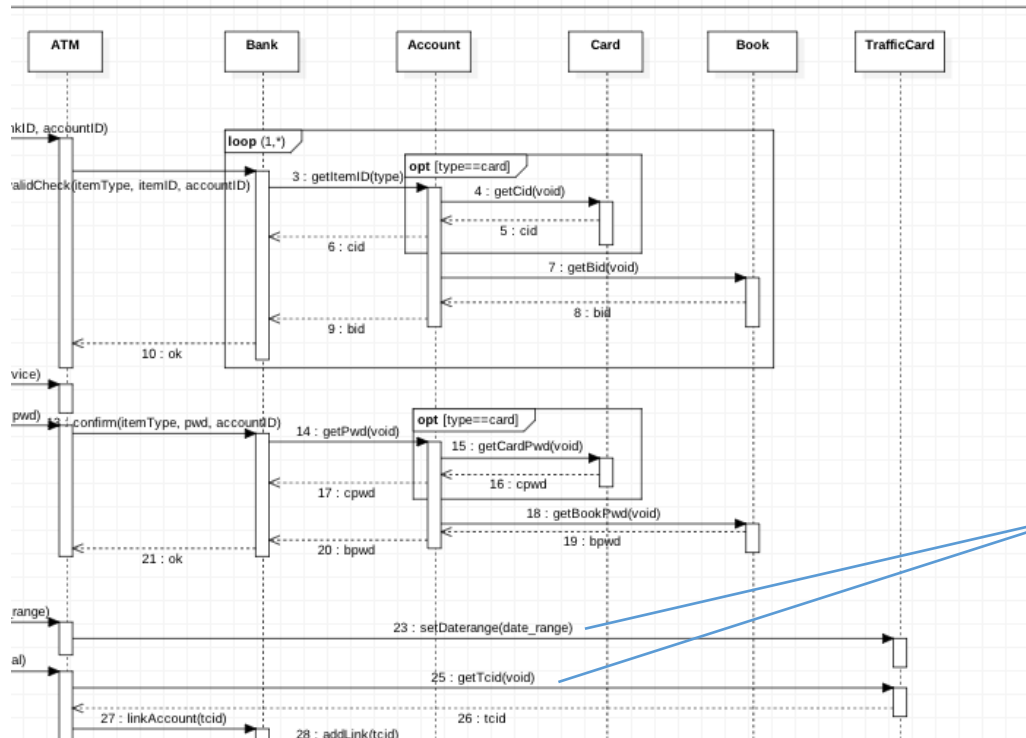
006. Class Diagram



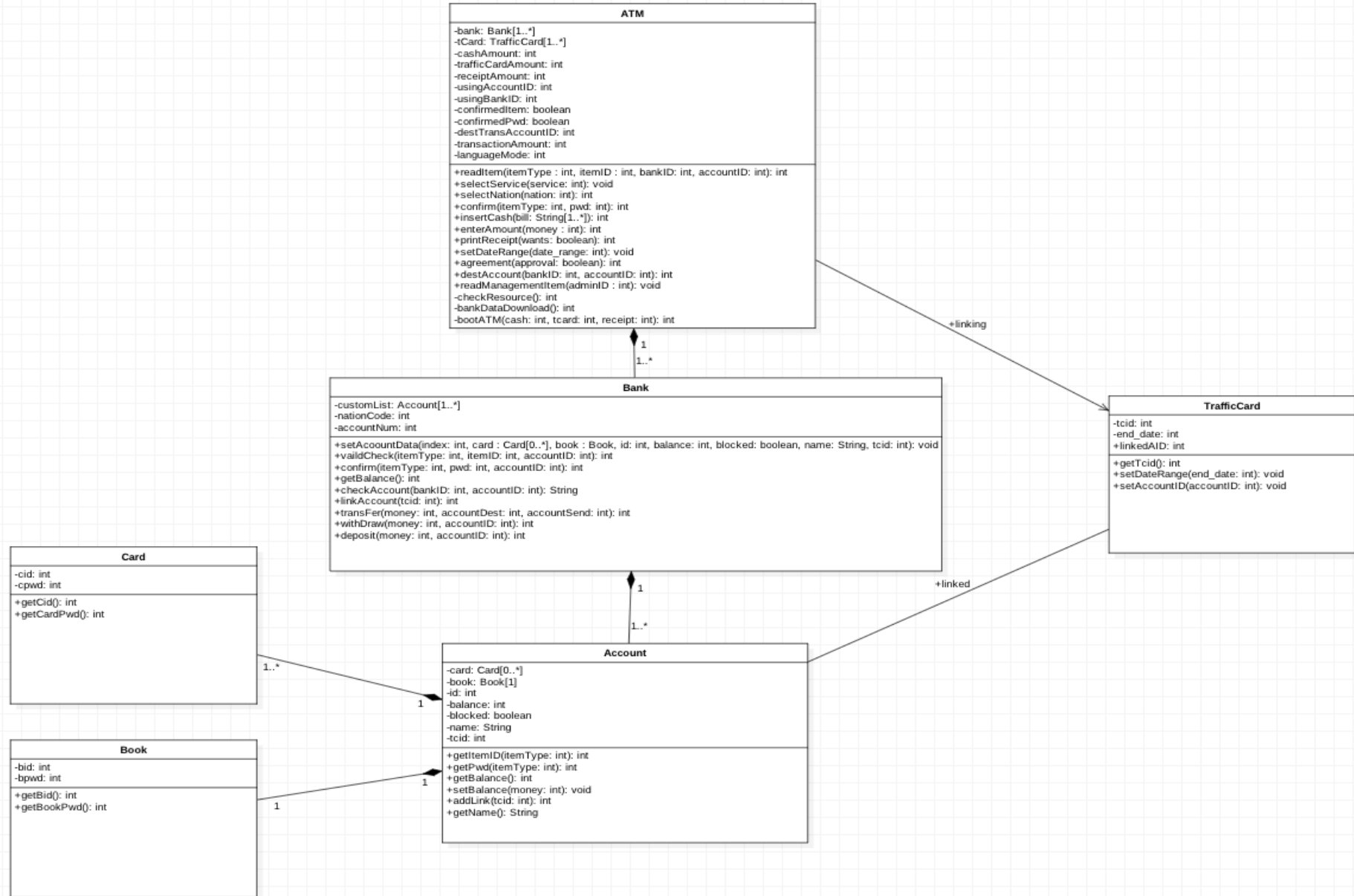
006. Class Diagram



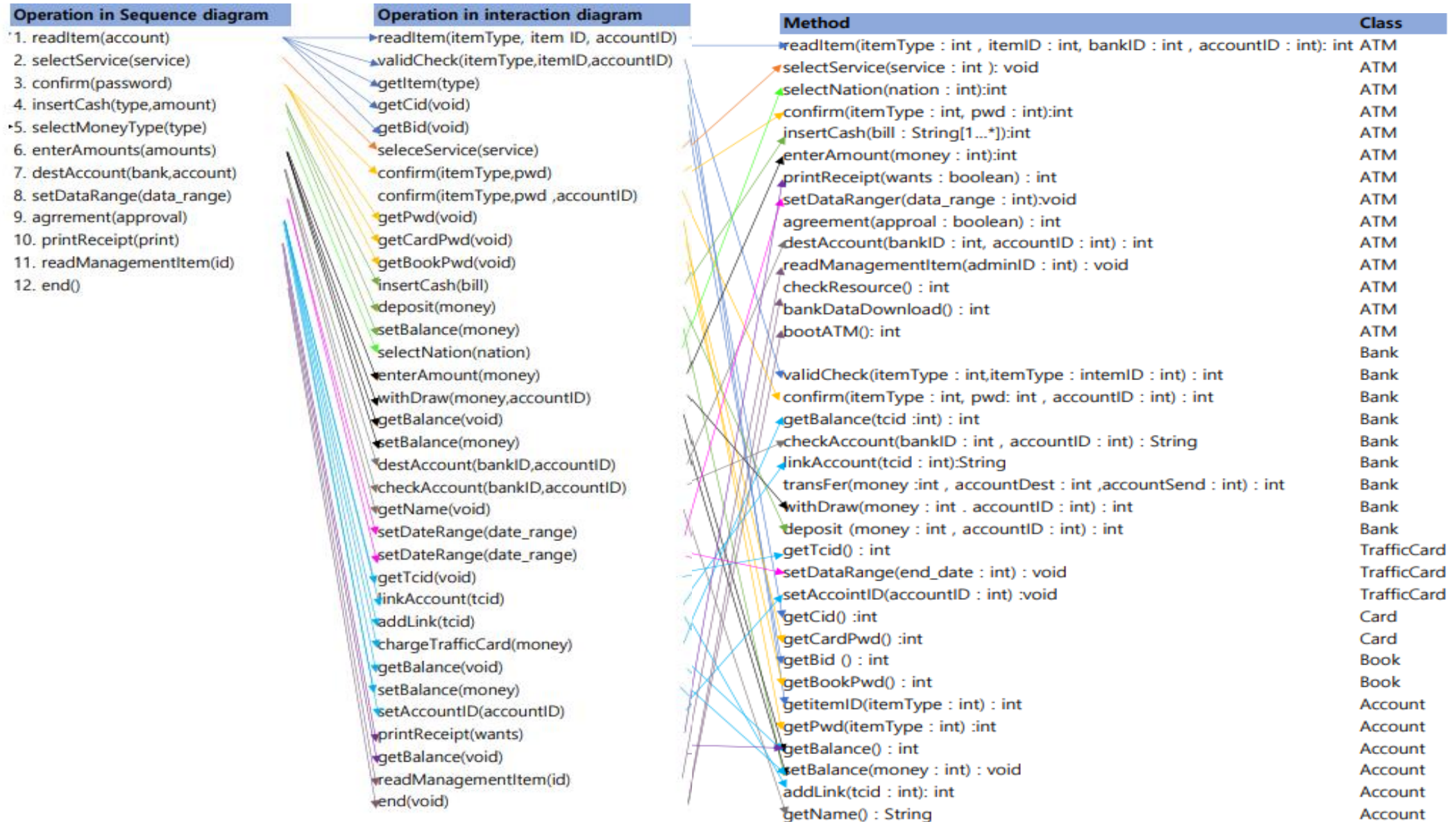
006. Class Diagram



006. Class Diagram



006. Traceability Analysis



Team 1

Q&A